

NEW



# CAPTIS CLAMPING SYSTEM

The modular and flexible system for internal  
and external clamping

**RÖHM**  
driven by technology

# CAPTIS CLAMPING SYSTEM

The new, modularly designed CAPTIS clamping system is very impressive with its high level of flexibility and compact design for an enlarged working space. In less than a minute, a quick conversion from external to internal clamping can be implemented thanks to its innovative and patent-pending rapid-change function. The encompassing clamping of the CAPTIS collets features proven RÖHM quality with its high concentricity and repeatability of 0.01 mm and excellent force distribution.

## CAPTIS COLLET CHUCK, ROTATING

For use on lathes.  
Power operated.

- ⊕ Modular construction for maximum flexibility
- ⊕ Compact design for more work space within the machine
- ⊕ Various combination and retooling possibilities

### CAPTIS-D

With axial pull and with through-hole. Shortest design. Convertible to CAPTIS-A.  
⊕ Ideal for rod and tube processing

### CAPTIS-A

With axial pull. Workpiece stop can be installed. Pull-down effect at the stop. Convertible to CAPTIS-D.  
⊕ Ideal for flange-like workpieces

### CAPTIS-AF

With axial fixed collet. Workpiece stop optional.  
⊕ Ideal for delicate workpieces, short clamping lengths and for use in opposed spindles or counter spindles



## CAPTIS-M COLLET CHUCK, ROTATING & STATIONARY

Ideally suited for rotating use in lathes as well as for stationary use in drilling, milling and machining centers, measuring machines as well as for conventional and manual processing. Operated manually with a security key.

- ⊕ Compact design with reduced interfering contours for optimum workpiece accessibility and enlarged working space
- ⊕ Modular conversion option for internal and external workpiece stop
- ⊕ Stable clamping using axial tension



Rotating use



Stationary use



**NEW**

# CAPTIS SYSTEM COMPONENTS

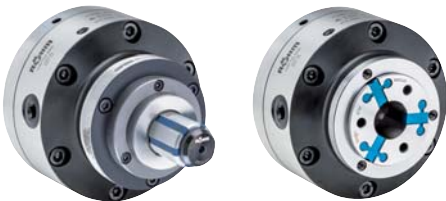
## SYSTEM COMPONENTS

The design as a consistently modular system makes it possible to combine individual components such as CAPTIS collet chuck, CAPTIS collet and ABSIS-C mandrel depending on the application.



## NEW

The new family member CAPTIS-M is also compatible with the ABSIS-C mandrel and the CAPTIS collet.



## CAPTIS COLLET

- ⊕ **INTERCHANGEABLE** rubber segments made of an innovative rubber compound for maximum durability
- ⊕ Clamping range  $\pm 0.5$  mm
- ⊕ Hardened and ground steel segments for high wear resistance



Different designs for clamping of machined and unmachined parts available.

## CHANGING DEVICE

The quick and easy collet change within 15 seconds reduces set-up times.



## ABSIS-C MANDREL

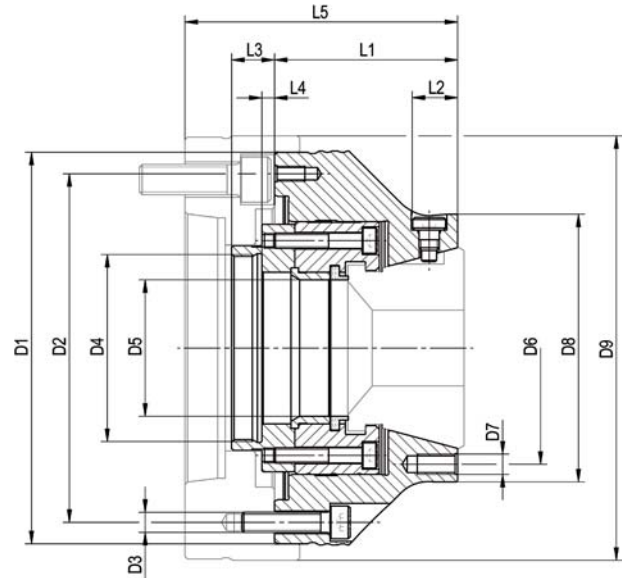
- ⊕ Innovative, patent-pending rapid-change function for quick retooling from external to internal clamping in less than 1 minute
- ⊕ Rapid change of clamping sleeves due to a central clamping screw
- ⊕ Stable and precise clamping due to axial pull



Mandrel suitable for CAPTIS-D, CAPTIS-A and CAPTIS-M (size 32-65)

# CAPTIS-D COLLET CHUCK

WITH AXIAL PULL AND THROUGH-HOLE

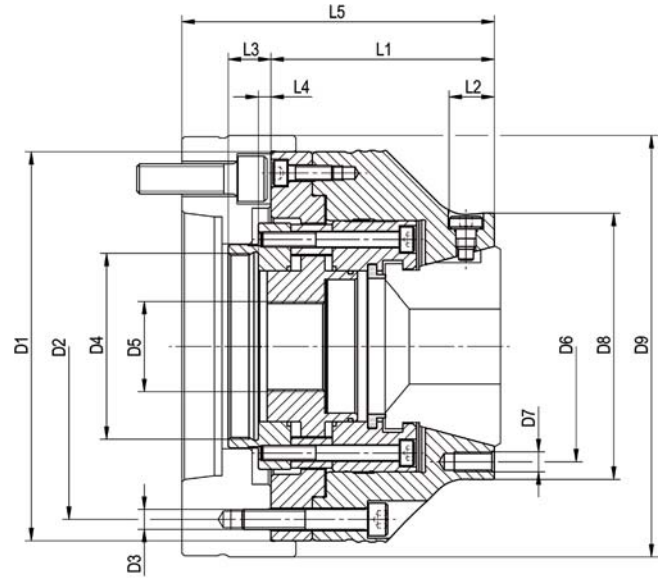


CAPTIS-D collet chucks - with axial pull

Size	32	42	52	65	80	100	120
Collet chucks	1283101	1283102	1283103	1283104	1283105	1283106 ▲	1283107 ▲
D1 mm	137	137	155	155	215	215	250
D2 mm	100	118	138	138	190	190	215
D3	6x M8	6x M8	6x M8	6x M8	6x M12	6x M12	6x M12
D4 mm	M54x1,5	M54x1,5	M74x1,5	M74x1,5	M94x1,5	M120x1,5	M132x1,5
D5	34	44	54	68	82	102	122
D6	70	92	92	110	132	190	225
D7	3x M8	3x M8	3x M8	3x M8	3x M10	3x M12	3x M12
D8	84	106	106	122	152	215	250
L1 mm	70,5	69	72,5	78	85	102	102
L2 mm	18	18	18	26	19	-	-
L3 mm	17	17	17	17	20	20	20
L4 min mm	1,5	1,5	1,5	1,5	-0,5	-0,5	-0,5
L4 max mm	7,5	7,5	7,5	7,5	5,5	5,5	5,5
Total stroke mm	6	6	6	6	6	6	6
Maximum draw bar pull kN	25	35	40	45	50	65	70
Total clamping force kN	60	70	80	90	100	130	140
Speed max, min <sup>-1</sup>	8000	7000	6500	6000	5500	5000	4000
Chucking capacity mm	4-32	4-42	4-52	4-65	5-80	42-100	62-120
Clamping device manual	1283285	1283286	1283287	1283288	1283289	-	-
Clamping device pneumatic	-	-	-	-	1362635	1362636	1362637
Conversion kit to CAPTIS-A	1283256	1283257	1283258	1283259	1283260	1283261	1283262
Turning fixture for soft collets	1316901	1316902	1316903	1316904	1316905	1316906	1316907

# CAPTIS-A COLLET CHUCK

WITH AXIAL PULL, PREPARED FOR WORKPIECE STOP

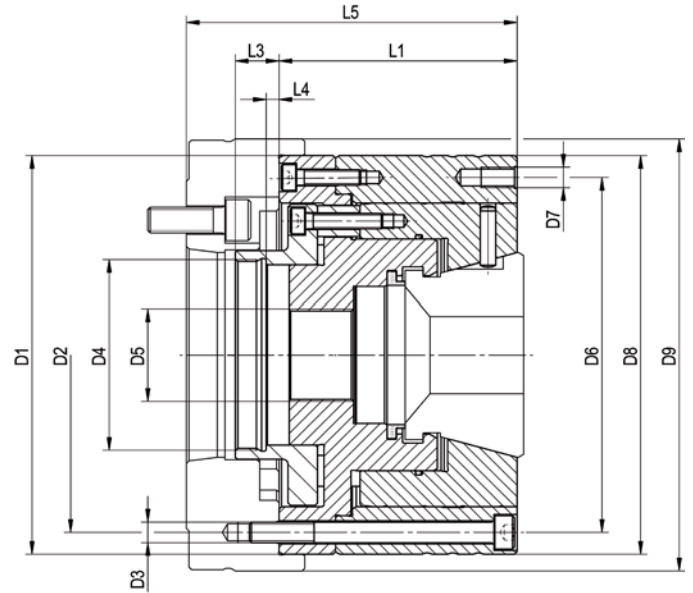


**CAPTIS-A collet chuck** - with axial tension against workpiece stop

Size	32	42	52	65	80	100	120
Collet chucks	1283108	1283109	1283110	1283111	1283112 ▲	1283113 ▲	1283114 ▲
D1 mm	137	137	155	155	215	215	250
D2 mm	100	118	138	138	190	190	225
D3	6x M8	6x M8	6x M8	6x M8	6x M12	6x M12	6x M12
D4 mm	M54x1,5	M54x1,5	M74x1,5	M74x1,5	M94x1,5	M120x1,5	M132x1,5
D5 mm	M22x1,5	M30x1,5	M36x1,5	M50x1,5	M55x1,5	M85x1,5	M105x1,5
D6	70	92	92	110	132	190	225
D7	3x M8	3x M8	3x M8	3x M8	3x M10	3xM12	3x M12
D8	84	106	106	122	152	215	250
L1 mm	84	82,5	89	94,5	103	122	122
L2 mm	18	18	18	26	19	-	-
L3 mm	17	17	17	17	20	20	20
L4 min mm	1,5	1,5	1,5	1,5	-0,5	-0,5	-0,5
L4 max mm	7,5	7,5	7,5	7,5	5,5	5,5	5,5
Total stroke mm	6	6	6	6	6	6	6
Maximum draw bar pull kN	25	35	40	45	50	65	70
Total clamping force kN	60	70	80	90	100	130	140
Speed max, min <sup>-1</sup>	8000	7000	6500	6000	5500	5000	4000
Chucking capacity mm	4-32	4-42	4-52	4-65	5-80	42-100	62-120
Clamping device manual	1283285	1283286	1283287	1283288	1283289	-	-
Clamping device pneumatic	-	-	-	-	1362635	1362636	1362637
Conversion kit to CAPTIS-D	1283249	1283250	1283251	1283252	1283253	1283254	1283255
Turning fixture for soft collets	1316901	1316902	1316903	1316904	1316905	1316906	1316907

# CAPTIS-AF COLLET CHUCK

WITH AXIALLY FIXED COLLET, PREPARED FOR WORKPIECE STOP

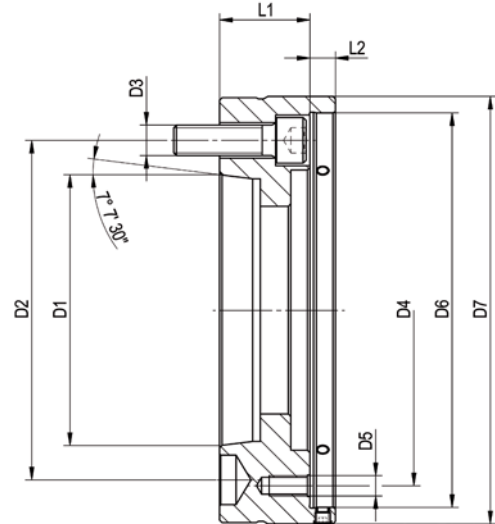


**CAPTIS-AF collet chuck** - axially fixed collet chuck, no axial tension against internal workpiece stop

Size	32	42	52	65	80	100	120
<b>Collet chucks</b>	<b>1285001</b>	<b>1285002</b>	<b>1285003</b>	<b>1285004</b>	<b>1285005</b>	<b>1285006 ▲</b>	<b>1285007 ▲</b>
D1 mm	137	137	155	155	215	215	250
D2 mm	120	120	138	138	190	190	225
D3	6x M8	6x M8	6x M8	6x M8	6x M12	6x M12	6x M12
D4 mm	M48x1,5	M54x1,5	M74x1,5	M74x1,5	M120x1,5	M120x1,5	M132x1,5
D5 mm	M22x1,5	M30x1,5	M36x1,5	M50x1,5	M65x1,5	M85x1,5	M105x1,5
D6	94	120	138	138	190	190	225
D7	3x M6	3x M8	3x M8	3x M8	3x M8	3x M8	3x M8
D8	105	137	155	155	215	215	250
L1 mm	80,5	81	92,5	92,5	102	102	122
L2 mm	34,7	-	-	-	-	-	-
L3 mm	15,5	16	17	17	18,5	18,5	18,5
L4 min	-4	-2,5	2,5	2,5	-1	-1	-1
L4 max	2	3,5	8,5	8,5	5	5	5
Total stroke mm	6	6	6	6	6	6	6
Maximum draw bar pull kN	25	35	40	45	50	65	70
Total clamping force kN	60	70	80	90	100	130	140
Speed max, min <sup>-1</sup>	8000	7000	6500	6000	5500	5000	4000
Chucking capacity mm	4-32	4-42	4-52	4-65	5-80	42-100	62-120
<b>Clamping device manual</b>	<b>1283285</b>	<b>1283286</b>	<b>1283287</b>	<b>1283288</b>	<b>1283289</b>	-	-
<b>Clamping device pneumatic</b>	-	-	-	-	<b>1362635</b>	<b>1362636</b>	<b>1362637</b>
<b>Turning fixture for soft collets</b>	<b>1316901</b>	<b>1316902</b>	<b>1316903</b>	<b>1316904</b>	<b>1316905</b>	<b>1316906</b>	<b>1316907</b>

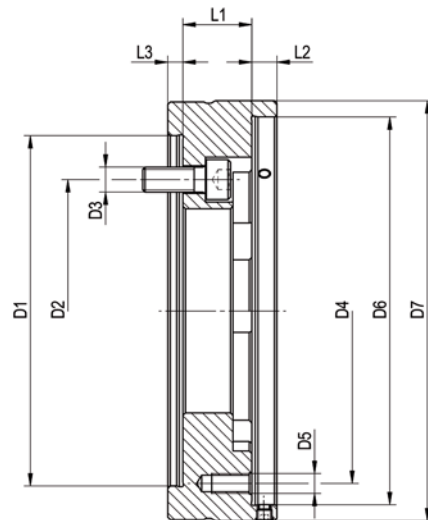
# CAPTIS INTERMEDIATE FLANGE

FOR CAPTIS-D, CAPTIS-A, CAPTIS-AF



Intermediate flange ISO 702-1 (DIN 55028) with adjusting screw

Size	32/42 - Nr.5	32/42 - Nr.6	52/65 - Nr.5	52/65 - Nr.6	52/65 - Nr.8	80/100 - Nr.6	80/100 - Nr.8	120 - Nr.8	120 - Nr.11
Intermediate flange	1283194	1283195	1283198	1283199	1283200	1283203 ▲	1283204	1283207	1283209
D1 mm	82,563	106,375	82,563	106,375	139,719	106,375	139,719	139,719	196,869
D2 mm	104,8	133,4	104,8	133,4	171,4	133,4	171,4	171,4	235
D3	6x M10	3x M12	6x M10	3x M12	3x M16	6x M12	3x M16	6x M16	3x M20
D4 mm	100/120	100/120	138	138	138	190	190	225	225
D5 mm	6x M8	6x M8	6x M8	6x M8	6x M8	6x M12	6x M12	6x M12	6x M12
D6	137	137	155	155	155	215	215	250	250
D7 mm	150	165	168	168	210	230	230	270	280
L1 mm	34,5	35,5	36	35,5	42	47	40	55	40
L2 mm	10	10	10	10	10	10	10	12	12



Intermediate flange cylindrical centre mount with adjusting screw

Size	32/42-Z140	52/65-Z140	52/65-Z170	80/100-Z170	80/100-Z220	120-Z220
Intermediate flange	1283196	1283201	1283202	1283205 ▲	1283206	1283208 ▲
D1 mm	140	140	170	170	220	220
D2 mm	104,8	104,8	133,4	133,4	171,4	171,4
D3	6x M10	6x M10	6x M12	6x M12	6x M16	6x M16
D4 mm	100/120	138	138	190	190	225
D5 mm	6x M8	6x M8	6x M8	6x M12	6x M12	6x M12
D6	137	155	155	215	215	250
D7 mm	150	168	180	230	230	270
L1 mm	19,5	27,5	22,5	47	40	55
L2 mm	10	10	10	10	10	12
L3 mm	6	6	6	6	6	6

# BENEFITS AT A GLANCE

## GREATEST FLEXIBILITY

- ⌚ Fast conversion from external to internal clamping in less than 1 minute due to the innovative and patent-pending quick-change function
- ⌚ Numerous combination options due to modular construction

## COMPACT AND MODULAR CONSTRUCTION

- ⌚ Compact design with reduced interfering contours for optimum workpiece accessibility and enlarged working space
- ⌚ Modular conversion option for internal and external workpiece stop

## SENSITIVE & DEFORMATION-FREE CLAMPING

- ⌚ Precise concentricity and repeatability of < 0.01 mm
- ⌚ Uniform force distribution by enclosing clamping
- ⌚ Stable clamping using axial tension

# FLEXIBLE APPLICATIONS

The CAPTIS-M collet chuck operated manually with a security key is ideally suited for rotating use in lathes as well as for stationary use in drilling, milling and machining centers, measuring machines as well as for conventional and manual processing.

## ROTATING USE



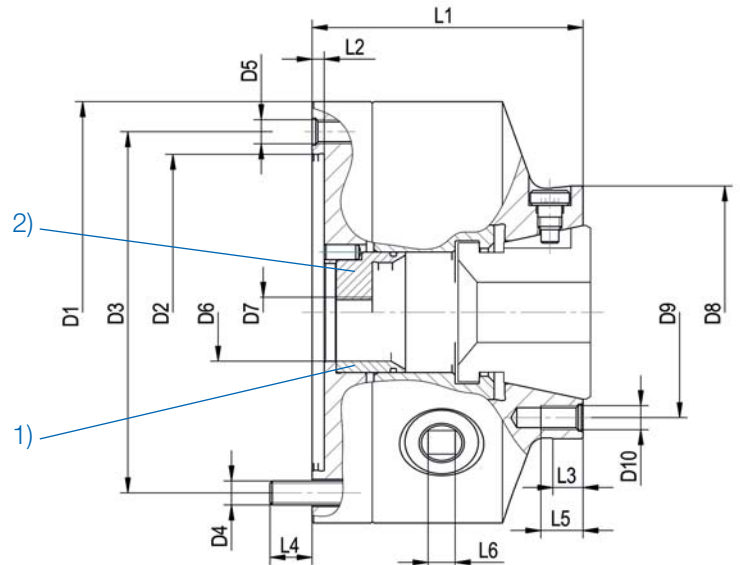
## STATIONARY USE





# CAPTIS-M COLLET CHUCK

WITH AXIAL TENSION



CAPTIS-M collet chuck - with axial tension against workpiece stop

Size	32	42	52	65
<b>Collet chucks</b> (incl. workpiece stop, protecting sleeve and security key)	<b>1345739</b>	<b>1345740</b>	<b>1345741</b>	<b>1345742 ▲</b>
D1 mm	140	160	160	200
D2 mm	105	125	125	160
D3 mm [H6]	120	140	140	176
D4	6xM8	6xM10	6xM10	6xM10
D5	3xM8	3xM10	3xM10	3xM10
D6 mm	32,5	42,5	52,5	65,5
D7	M10	M10	M10	M10
D8 mm [g6]	84	106	106	122
D9 mm	70	92	92	110
D10	3xM8	3xM8	3xM8	3xM8
L1 mm	90	100	100	110
L2 mm	4	4	4	4
L3 mm	10	10	10	10
L4 mm	13	14	14	16
L5 mm	14	16	16	16
L6 mm	9	10	10	11
Total stroke mm	6	6	6	6
Expansion collet mm	2,1	2,6	2,6	2,6
Max. tightening torque	60	120	120	120
Total clamping force kN	30	60	60	50
Speed max. min <sup>-1</sup>	5000	4500	4500	4000
Chucking capacity mm	4-32	4-42	4-52	4-65
<b>Protecting sleeve 1)</b>	<b>1345751</b>	<b>1345760</b>	<b>1345768</b>	<b>1345777</b>
<b>Workpiece stop 2)</b>	<b>1345749</b>	<b>1345758</b>	<b>1345766</b>	<b>1345775</b>
<b>Clamping device manual</b>	<b>1283285</b>	<b>1283286</b>	<b>1283287</b>	<b>1283288</b>
<b>Clamping device pneumatic</b>	-	-	-	-
<b>Key (only for chucks with stationary use)</b>	<b>107428</b>	<b>107429</b>	<b>107429</b>	<b>107430</b>
<b>Security key (acc. to DIN 1550 for rotating chucks)</b>	<b>154372</b>	<b>154373</b>	<b>154373</b>	<b>154374</b>
<b>Turning fixture for soft collets</b>	<b>1316901</b>	<b>1316902</b>	<b>1316903</b>	<b>1316904</b>



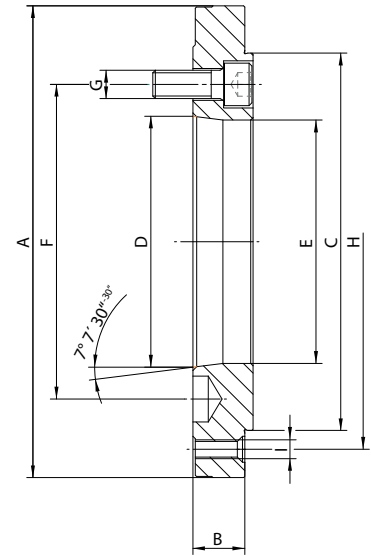
Manual changing device



Security key

# INTERMEDIATE FLANGE

SUITABLE FOR CAPTIS-M AND LATHE CHUCKS

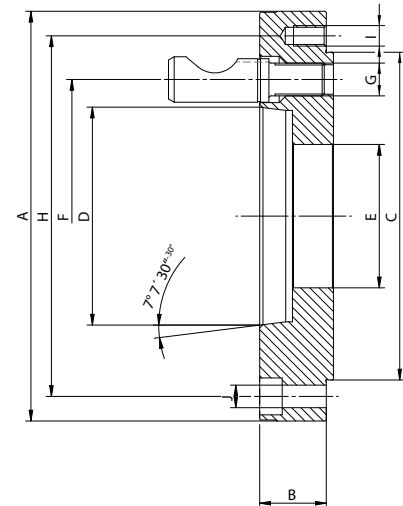


A09

Steel Intermediate flange according to **DIN ISO 702-1** (DIN 55026) / cylindrical mount on chuck side according to DIN 6350

Size	32	32	32	42/52	42/52	42/52	42/52	65/80	65/80	65/80
Short taper size	Gr. 4	Gr. 5	Gr. 6	Gr. 4	Gr. 5	Gr. 6	Gr. 8	Gr. 5	Gr. 6	Gr. 8
<b>Intermediate flange</b>	<b>182902 ▲</b>	<b>182904 ▲</b>	<b>182906 ▲</b>	<b>182908 ▲</b>	<b>182910 ▲</b>	<b>182912 ▲</b>	<b>182914 ▲</b>	<b>182918 ▲</b>	<b>182920 ▲</b>	<b>182922 ▲</b>
A mm	140	140	165	160	160	165	210	200	200	210
B mm	21	21	25	18	18	25	32	18	22	32
C mm	95	95	95	125	125	125	125	160	160	160
D mm	63,513	82,563	106,375	63,513	82,563	106,375	139,719	82,563	106,375	139,719
E mm	61	79,6	80	61	79,6	103,2	100	79,6	103,2	136,2
F mm	82,6	104,8	133,4	82,6	104,8	133,4	171,4	104,8	133,4	171,4
G	M10	M10	M12	M10	M10	M12	M16	M10	M12	M16
H mm	108 (120)	108 (120)	108 (120)	140	140	140	140	176	176	176
I	3x6xM8	3x6xM8	6xM8	6xM10	6xM10	6xM10	6xM10	6xM10	6xM10	6xM10

Complete with fastening screws



A09

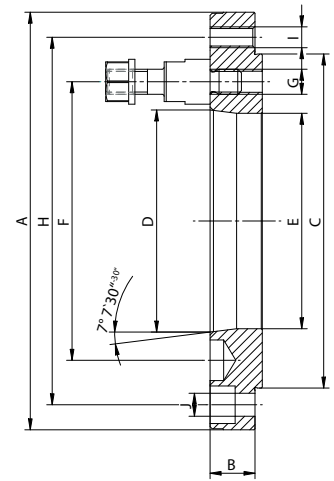
Steel Intermediate flange according to **DIN ISO 702-2** (DIN 55029) / cylindrical mount on chuck side according to DIN 6350

Size	32	32	32	42/52	42/52	42/52	42/52	65/80	65/80	65/80
Short taper size	Gr. 4	Gr. 5	Gr. 6	Gr. 4	Gr. 5	Gr. 6	Gr. 8	Gr. 5	Gr. 6	Gr. 8
<b>Intermediate flange</b>	<b>182958 ▲</b>	<b>182960 ▲</b>	<b>182962 ▲</b>	<b>182966 ▲</b>	<b>182968 ▲</b>	<b>182970 ▲</b>	<b>182972 ▲</b>	<b>182976 ▲</b>	<b>182978 ▲</b>	<b>182980 ▲</b>
A mm	140	146	181	160	160	181	225	200	200	225
B mm	24	30	36	23,5	26,5	35,5	38,5	26,50	32,50	39,50
C mm	95	95	95	125	125	125	125	160	160	160
D mm	63,513	82,563	106,375	63,513	82,563	106,375	139,719	82,563	106,375	139,719
E mm	33	33	33	50	50	50	50	70	70	70
F mm	82,6	104,8	133,4	82,6	104,8	133,4	171,4	104,8	133,4	171,4
G	M10x1	M12x1	M16x1,5	M10x1	M12x1	M16x1,5	M20x1,5	M12x1	M16x1,5	M20x1,5
H mm	108 (120)	108 (120)	108 (120)	140	140	140	140	176	176	176
I	6xM8	6xM8	6xM8	6xM10	6xM10	6xM10	6xM10	6xM10	6xM10	6xM10
J mm	3x9	-	-	3x11	3x11	-	-	3x11	3x11	-

Complete with cam locking bolts

# INTERMEDIATE FLANGE

SUITABLE FOR CAPTIS-M AND LATHE CHUCKS

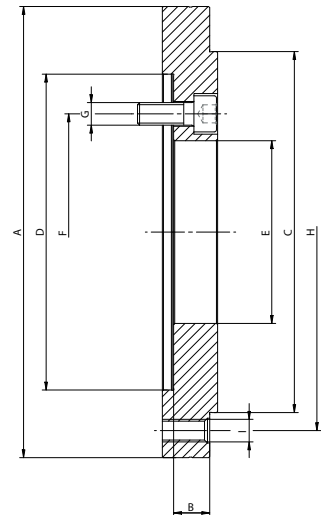


A09

Steel Intermediate flange according to **DIN ISO 702-3** (DIN 55027) / cylindrical mount on chuck side according to DIN 6350

Size	32	32	32	42/52	42/52	42/52	42/52	65/80	65/80	65/80
Short taper size	Gr. 4	Gr. 5	Gr. 6	Gr. 4	Gr. 5	Gr. 6	Gr. 8	Gr. 5	Gr. 6	Gr. 8
<b>Intermediate flange</b>	<b>183014 ▲</b>	<b>183016 ▲</b>	<b>183018 ▲</b>	<b>183022 ▲</b>	<b>183024 ▲</b>	<b>183026 ▲</b>	<b>183028 ▲</b>	<b>183032 ▲</b>	<b>183034 ▲</b>	<b>183036 ▲</b>
A mm	140	140	170	160	160	170	220	200	200	220
B mm	16,5	16,5	27	21,5	21,5	18	31,5	21,5	21,5	21,5
C mm	95	95	95	125	125	125	125	160	160	160
D mm	63,513	82,563	106,375	63,513	82,563	106,375	139,719	82,563	106,375	139,719
E mm	61	79,6	80	61	79,6	103,2	100	79,6	103,2	136,2
F mm	85	104,8	133,4	85	104,8	133,4	171,4	104,8	133,4	171,4
G	M10	M10	M12	M10	M10	M12	M16	M10	M12	M16
H mm	108 (120)	108 (120)	108 (120)	140	140	140	140	176	176	176
I	6xM8	6xM8	6xM8	6xM10	6xM10	6xM10	6xM10	6xM10	6xM10	6xM10
J mm	3x9	-	-	3x11	3x11	-	-	3x11	3x11	3x11

Complete with studs and collar nuts



A09

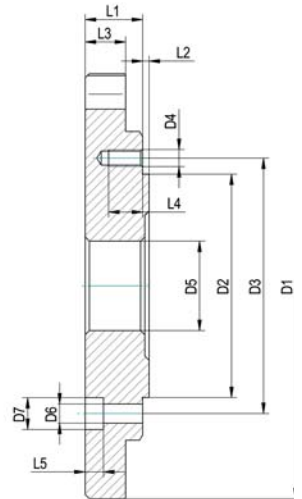
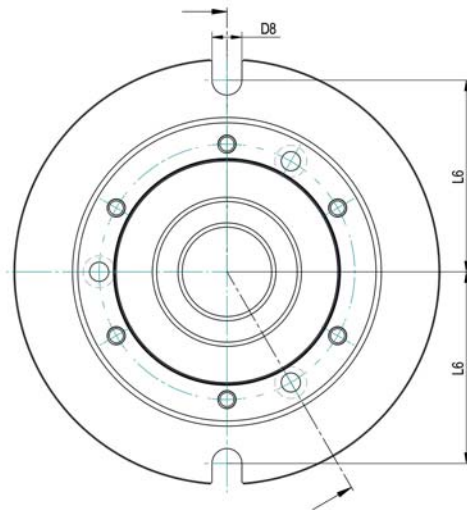
Steel Intermediate flange according to **DIN ISO 702-4** (DIN 55028) / cylindrical mount on chuck side according to DIN 6350

Size	32	32	32	42/52	42/52	42/52	42/52	65/80	65/80
Flange	Gr. 3	Gr. 4	Gr. 5	Gr. 3	Gr. 4	Gr. 5	Gr. 6	Gr. 5	Gr. 6
<b>Cylindrical mount</b>	<b>90</b>	<b>115</b>	<b>140</b>	<b>90</b>	<b>115</b>	<b>140</b>	<b>170</b>	<b>140</b>	<b>170</b>
<b>Intermediate flange</b>	<b>1349459 ▲</b>	<b>1349461 ▲</b>	<b>1349463 ▲</b>	<b>1349465 ▲</b>	<b>1349467 ▲</b>	<b>1349469 ▲</b>	<b>1349471 ▲</b>	<b>1349473 ▲</b>	<b>1349475 ▲</b>
A mm	140	140	150	160	160	160	180	200	200
B mm	13	20	18	13	13	15	20	16	18
C mm	95	95	95	125	125	125	125	160	160
D mm	90 + 0,022/0	115 + 0,022/0	140 + 0,025/0	90 + 0,022/0	115 + 0,022/0	140 + 0,025/0	170 + 0,025/0	140 + 0,025/0	170 + 0,025/0
E mm	43	53	81	43	53	81	81	81	81
F mm	70,6	82,6	104,8	70,6	82,6	104,8	133,4	104,8	133,4
G mm	3xM10	3xM10	3xM10	6xM10	6xM10	6xM10	3xM12	6xM10	6xM12
H mm	120	120	120	140	140	140	140	176	176
I	6xM8	6xM8	6xM8	6xM10	6xM10	6xM10	6xM10	6xM10	6xM10

Complete with fastening screws

# BASE PLATE

SUITABLE FOR CAPTIS-M AND LATHE CHUCKS



A09

Base plates for CAPTIS-M and lathe chucks with cylindrical centre mount, DIN 6350

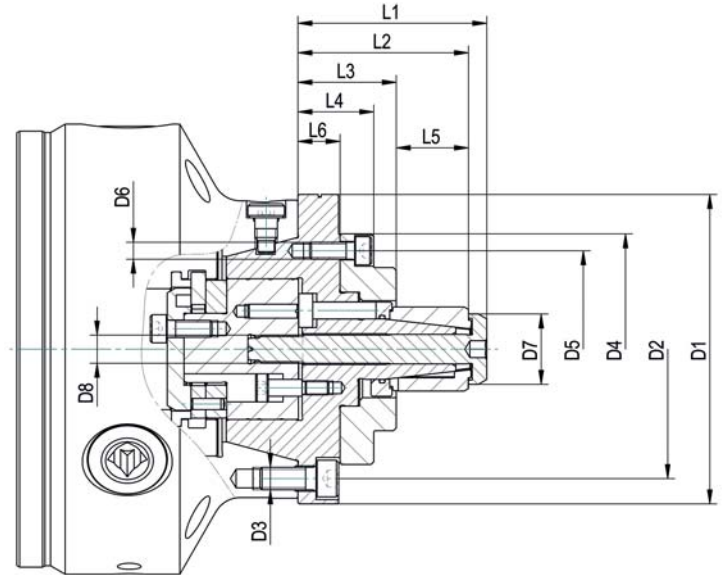
Size	32	42/52	65/80
Base plate	1352890	162793	162401
D1 mm	220	240	280
D2 mm	105	125	160
D3 mm	120	140	176
D4	6xM8	6xM10	6xM10
D5 mm	40	42	55
D6 mm	14	14	14
D7 mm	28	28	28
D8 mm	3x9	3x11	3x11
D9 mm	3x15	3x18	3x18
D10	190	212	252
L1 mm	27	27	27
L2 mm	3	3	3
L3 mm	16	16	16
L4 mm	14	17	17
L5	10	11	11

## STATIONARY USE WITH BASE PLATE



# ABSIS-C MANDREL

MANDREL FOR CHANGING FROM EXTERNAL TO INTERNAL CLAMPING, SUITABLE FOR CAPTIS-M, CAPTIS-D, CAPTIS-A

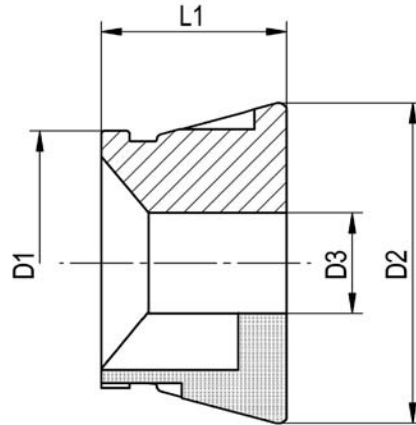


ABSIS-C clamping mandrel

Size	ABSIS 00	ABSIS 00	ABSIS 00	ABSIS 00	ABSIS 01	ABSIS 01	ABSIS 01	ABSIS 01	ABSIS 02	ABSIS 02	ABSIS 02	ABSIS 03
Segment clamping mandrel	1286200	1286201	1286202	1286203	1286204	1286205	1286206	1286207	1286208	1286209	1286210	1286211
For	CAPTIS 32	CAPTIS 42	CAPTIS 52	CAPTIS 65	CAPTIS 32	CAPTIS 42	CAPTIS 52	CAPTIS 65	CAPTIS 42	CAPTIS 52	CAPTIS 65	CAPTIS 65
D Min-Ø unclamped from mm	19,7	19,7	19,7	19,7	25,7	25,7	25,7	25,7	35,7	35,7	35,7	50,7
D Min-Ø unclamped to mm	27,7	27,7	27,7	27,7	38,7	38,7	38,7	38,7	54,7	54,7	54,7	81,7
D1	88	108	110	128	88	108	110	128	110	110	128	128
D2	70	90	92	110	70	90	92	110	90	92	110	110
D3	3x M8	3x M8	3x M8	3x M8	3x M8	3x M8	3x M8	3x M8	3x M8	3x M8	3x M8	3x M8
D4	82	82	82	82	82	82	82	82	97	97	97	102
D5	70	70	70	70	70	70	70	70	84	84	84	89
D6	3x M6	3x M6	3x M6	3x M6	3x M6	3x M6	3x M6	3x M6	3x M6	3x M6	3x M6	3x M6
D7	19	19	19	19	25	25	25	25	35	35	35	48
D8	M6x0,75	M6x0,75	M6x0,75	M6x0,75	M10x1	M10x1	M10x1	M10x1	M14x1	M14x1	M14x1	M18x1
L1	62,2	62,2	62,2	62,2	67,2	67,2	67,2	67,2	95,2	95,2	95,2	105,2
L2	56,7	56,7	56,7	56,7	60,7	60,7	60,7	60,7	85	85	85	93,2
L3	35	35	35	35	35	35	35	35	42,5	42,5	42,5	44,5
L4	25	25	25	25	27	27	27	27	30,25	30,25	30,25	31,5
L5	21,7	21,7	21,7	21,7	25,7	25,7	25,7	25,7	42,5	42,5	42,5	48,7
L6	15	15	15	15	15	15	15	15	18	18	18	18,5

# COLLET

SUITABLE FOR ALL CAPTIS CLAMPING SYSTEMS



### Clamping of unmachined parts with extension

Size	D1	D2	L1	LQ	Q	G	W	Round	Hexagon	Square	Raising	Order No.
32	46,2	57,7	47	X				8-32mm			1	CAPTIS-32-47-RLQ / D3*
32	46,2	57,7	47		X				7-27mm		1	CAPTIS-32-47-SQ / D3*
32	46,2	57,7	47		X					7-22mm	1	CAPTIS-32-47-VQ / D3*

### Clamping of machined parts without extension

Size	D1	D2	L1	LQ	Q	G	W	Round	Hexagon	Square	Raising	Order No.
32	46,2	57,7	44			X		4-32mm			1	CAPTIS-32-44-RG / D3*
32	46,2	57,7	44				X	5,15,20mm			1	CAPTIS-32-44-WG / D3*

### Clamping of unmachined parts with extension

Size	D1	D2	L1	LQ	Q	G	W	Round	Hexagon	Square	Raising	Order No.
42	54	79,5	47	X				8-42mm			0,5	CAPTIS-42-47-RLQ / D3*
42	54	79,5	47		X				7-36mm		1	CAPTIS-42-47-SQ / D3*
42	54	79,5	47		X					7-30mm	1	CAPTIS-42-47-VQ / D3*

### Clamping of machined parts without extension

Size	D1	D2	L1	LQ	Q	G	W	Round	Hexagon	Square	Raising	Order No.
42	54	79,5	42			X		4-42mm			0,5	CAPTIS-42-42-RG / D3*
42	54	79,5	42				X	8,15,30mm			0,5	CAPTIS-42-42-WG / D3*

### Clamping of unmachined parts with extension

Size	D1	D2	L1	LQ	Q	G	W	Round	Hexagon	Square	Raising	Order No.
52	65,7	79,5	46	X				8-52mm			0,5	CAPTIS-52-46-RLQ / D3*
52	65,7	79,5	46		X				7-45mm		1	CAPTIS-52-46-SQ / D3*
52	65,7	79,5	46		X					8-36mm	1	CAPTIS-52-46-VQ / D3*

### Clamping of machined parts without extension

Size	D1	D2	L1	LQ	Q	G	W	Round	Hexagon	Square	Raising	Order No.
52	65,7	79,5	46			X		4-52mm			0,5	CAPTIS-52-46-RG / D3*
52	65,7	79,5	46				X	8,15,30mm			0,5	CAPTIS-52-46-WG / D3*

(G): Smooth  
 (LQ): Longitudinal and transverse grooves  
 (Q): Transverse grooves  
 (W): Soft

from 4-7 mm smooth  
 from 8-10 mm with trans. grooves  
 caused by production

\* Please specify clamping diameters D3 in the order, valid for collet chucks type LQ + Q

# COLLET

## SUITABLE FOR ALL CAPTIS CLAMPING SYSTEMS

### Clamping of unmachined parts with extension

Size	D1	D2	L1	LQ	Q	G	W	Round	Hexagon	Square	Raising	Order No.
65	80	99,5	58	X				8-65mm			0,5	CAPTIS-65-58-RLQ / D3*
65	80	99,5	58		X				7-56mm		1	CAPTIS-65-58-SQ / D3*
65	80	99,5	58		X					7-46mm	1	CAPTIS-65-58-VQ / D3*

### Clamping of machined parts without extension

Size	D1	D2	L1	LQ	Q	G	W	Round	Hexagon	Square	Raising	Order No.
65	80	99,5	53			X		8-65mm			0,5	CAPTIS-65-53-RG / D3*
65	80	99,5	53				X	8,20,40mm			0,5	CAPTIS-65-53-WG / D3*

### Clamping of unmachined parts with extension

Size	D1	D2	L1	LQ	Q	G	W	Round	Hexagon	Square	Raising	Order No.
80	94,5	114,5	53	X				11-80mm			1	CAPTIS-80-53-RLQ / D3*
80	94,5	114,5	53		X				7-68mm		1	CAPTIS-80-53-SQ / D3*
80	94,5	114,5	53		X					8-42mm	1	CAPTIS-80-53-VQ / D3*

### Clamping of machined parts without extension

Size	D1	D2	L1	LQ	Q	G	W	Round	Hexagon	Square	Raising	Order No.
80	94,5	114,5	53			X		5-80mm			1	CAPTIS-80-53-RG / D3*
80	94,5	114,5	53				X	20,30,40,60mm			1	CAPTIS-80-53-WG / D3*

### Clamping of unmachined parts with extension

Size	D1	D2	L1	LQ	Q	G	W	Round	Hexagon	Square	Raising	Order No.
100	121	144,5	59	X				42-100mm			1	CAPTIS-100-59-RLQ / D3*
100	121	144,5	59		X				50-86mm		1	CAPTIS-100-59-SQ / D3*
100	121	144,5	59		X					50-70mm	1	CAPTIS-100-59-VQ / D3*

### Clamping of machined parts without extension

Size	D1	D2	L1	LQ	Q	G	W	Round	Hexagon	Square	Raising	Order No.
100	121	144,5	59			X		42-100mm			1	CAPTIS-100-59-RG / D3*
100	121	144,5	59				X	30,45,65,90mm			1	CAPTIS-100-59-WG / D3*

### Clamping of unmachined parts with extension

Size	D1	D2	L1	LQ	Q	G	W	Round	Hexagon	Square	Raising	Order No.
120	141,8	180	61	X				62-120mm			1	CAPTIS-120-61-RLQ / D3*
120	141,8	180	61		X				50-104mm		1	CAPTIS-120-61-SQ / D3*
120	141,8	180	61		X					50-85mm	1	CAPTIS-120-61-VQ / D3*

### Clamping of machined parts without extension

Size	D1	D2	L1	LQ	Q	G	W	Round	Hexagon	Square	Raising	Order No.
120	141,8	180	61			X		62-120mm			1	CAPTIS-120-61-RG / D3*
120	141,8	180	61				X	65,90,110mm			1	CAPTIS-120-61-WG / D3*

(G): Smooth

(LQ): Longitudinal and transverse grooves

(Q): Transverse grooves

(W): Soft

from 4-7 mm smooth

from 8-10 mm with trans. grooves

caused by production

\* Please specify clamping diameters D3 in the order, valid for collet chucks type LQ + Q

# CLAMPING DEVICE



Clamping device for CAPTIS collets, manual

Size	32	42
Clamping device manual	1283285	1283286
Suitable for	round	round
Weight kg	1	1,1



Clamping device for CAPTIS collets, manual

Size	52	65	80
Clamping device manual	1283287	1283288	1283289
Suitable for	round	round	round
Weight kg	1,1	1,2	1,3



Clamping device for CAPTIS collets, pneumatic

Size	80	100
Clamping device pneumatic	1362635	1362636
Suitable for	round	round
Weight kg	2,5	2,8



Clamping device for CAPTIS collets, pneumatic, 2 hand actuation

Size	120
Clamping device pneumatic (2 hand actuation)	1362637 ▲
Suitable for	round
Weight kg	3



# NOTES



**RÖHM GmbH**

Heinrich-Röhm-Straße 50

89567 Sontheim/Brenz

Germany

Tel +49 7325 16 0

Fax +49 7325 16 510

info@roehm.biz

www.roehm.biz



Id.-Nr. 1242368 / 0918 B